

MX-1000 VISION-ENABLED MOBILE TERMINAL

The MX-1000 vision-enabled mobile terminal allows you to leverage the latest mobile devices for your industrial barcode reading applications. The MX platform is both rugged and modular. The flexible design accepts a variety of both current and future generation smartphones and augments their capability in a fully ruggedized housing, tough enough to stand up to the most challenging environments. The MX-1000 has Cognex patented class-leading 1DMax® and 2DMax® algorithms to give the fastest barcode reading performance on both 1-D, 2-D and even challenging direct part mark (DPM) codes. Put your mobile devices to work across your entire enterprise!

➤ RUGGED

The design of the MX-1000 makes any supported mobile device ready to meet the challenges of the most demanding environments. The industrial-grade, rugged housing can handle up to 50 drops from 2 meters onto concrete. It is IP-65 sealed and uses inductive wireless charging so there are no exposed electrical contacts to wear out or fail.

➤ MODULAR

The MX platform is also future-proof and accepts a variety of Android® and iOS® smartphones. If your device needs to be repaired or upgraded, simply exchange the top cover kit to adapt the MX-1000 to any supported mobile device. The modular design means your investment is protected and you are always ready for the latest technology. The pistol grip accessory doubles the MX-1000 battery capacity that powers both the scan engine and the mobile device.

➤ SMART

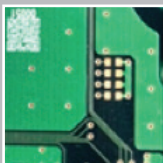
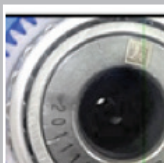
MX-1000 vision-enabled mobile terminals are equipped with world-class Cognex barcode reading algorithms. 1-D and 2-D label-based codes as well as challenging 2-D DPM codes can be read quickly and easily. The MX-1000 leverages the latest communication technologies supported by your mobile device including 3G, 4G, 4G LTE, Wi-Fi, Bluetooth and more.



Proven performance

The MX-1000 is ideal for applications in any industrial environment that requires robust 1-D and 2-D barcode reading technology.

- Couriers
- Field service
- Parcel delivery
- Transportation
- Logistics
- Utilities
- Telecommunications
- Cable companies
- Pharmaceutical
- Tobacco
- Automotive
- Manufacturing



Accessories

The MX-1000 has a selection of available accessories for charging and handling.



The sturdy belt holster attaches comfortably and easily to any size belt and is made of industrial-grade materials to withstand heavy daily use.



The pistol grip handle offers an alternative configuration for comfortable "point & shoot" barcode reading. The handle contains a secondary battery that doubles the MX-1000 power capacity.



The wireless charging station eliminates charge failures from poor connections ensuring a full charge in less than 6 hours. The spare battery can be fully charged in less than 4 hours.

MX-1000 SERIES SPECIFICATIONS

Dimensions	208.6 mm x 88.9 mm x 42.1 mm
Weight	510 g (675 g with pistol grip)
Operating Temperature	0 °C to 40 °C (32 °F to 104 °F) **
Storage Temperature	-40 °C to 60 °C (-40 °F to 140 °F) **
Maximum Humidity	95% (non-condensing)
Material	Polycarbonate housing with overmold
Imager	752 x 480 global shutter sensor
Aiming	Green LED
Status Outputs	LED, beeper and vibration
Communications	Scan engine communicates to mobile device through USB port Mobile device communicates via Wi-Fi, Bluetooth, Cellular and others based on model
Supported Devices	Samsung® Galaxy® S4 and S5, Apple® iPhone® 5/5S, 6/6S and iPod® 5th Generation
Symbologies	1-D: UPC/EAN/JAN, Codabar, Interleaved 2 of 5, Code 39, Code 128, Code 93, Pharmacode, GS1 DataBar, PDF417, Micro PDF417 2-D: DataMatrix, QR Code, MicroQR Code, DotCode, and postal code*
Lighting	Integrated LED illumination
Base Station Power Supply Requirements	24 V, 13 W maximum LPS or NEC Class 2 power supply
Battery (brick style)	3.7 V, 3070 mAh Li-Polymer
Battery (pistol grip)	3.7 V, 3100 mAh Li-Ion
Environmental	Compliant with RoHS directive 2002/98/EEC
Regulatory Electrical EMI/RFI	CB Scheme: IEC 60950-1, UL 60950-1, CSA C2.2 No. 60950-1-07 FCC 47 CFR Part 15 Subpart B, CE, ICES-003, KCC
Data Validation	US DoD UID Guidelines, GS-1, ISO15434 and ISO15418
Trigger	Left- and right-handed buttons, pistol grip or touch screen software

* MX-1000X only.

** Value for MX-1000. Max temperature varies by mobile device.

MX-1000 SERIES SCAN CHART

7 mil 2-D Code	Up to 85 mm
10 mil 2-D Code	Up to 100 mm
6 mil 1-D Code	Up to 110 mm

COGNEX

Companies around the world rely on Cognex vision and ID to optimize quality, drive down costs and control traceability.

Corporate Headquarters One Vision Drive Natick, MA 01760 USA Tel: +1 508 650 3000 Fax: +1 508 650 3344

Americas

Americas +1 508 650 3000

Europe

Austria +49 721 6639 393
Belgium +31 403 05 00 43
France +33 1 4777 1551
Germany +49 721 6639 393
Hungary +36 1 501 0650
Ireland +0808 168 3001
Italy +39 02 6747 1200

Netherlands +31 403 05 00 43
Poland +48 71 776 07 52
Spain +34 93 445 67 78
Sweden +46 21 14 55 88
Switzerland +49 721 6639 393
Turkey +90 212 306 3120
United Kingdom +0808 168 3001

Asia

China +86 21 5050 9922
India +9120 4014 7840
Japan +81 3 5977 5400
Korea +82 2 539 9047
Singapore +65 632 55 700
Taiwan +886 3 578 0060

© Copyright 2016, Cognex Corporation. All information in this document is subject to change without notice. All Rights Reserved. Cognex, the Cognex logo, Cognex.com 1DMax and 2DMax are registered trademarks of Cognex Corporation. All other trademarks are the property of their respective owners. Lit. No. MX1000-DS-201604-EN

www.cognex.com